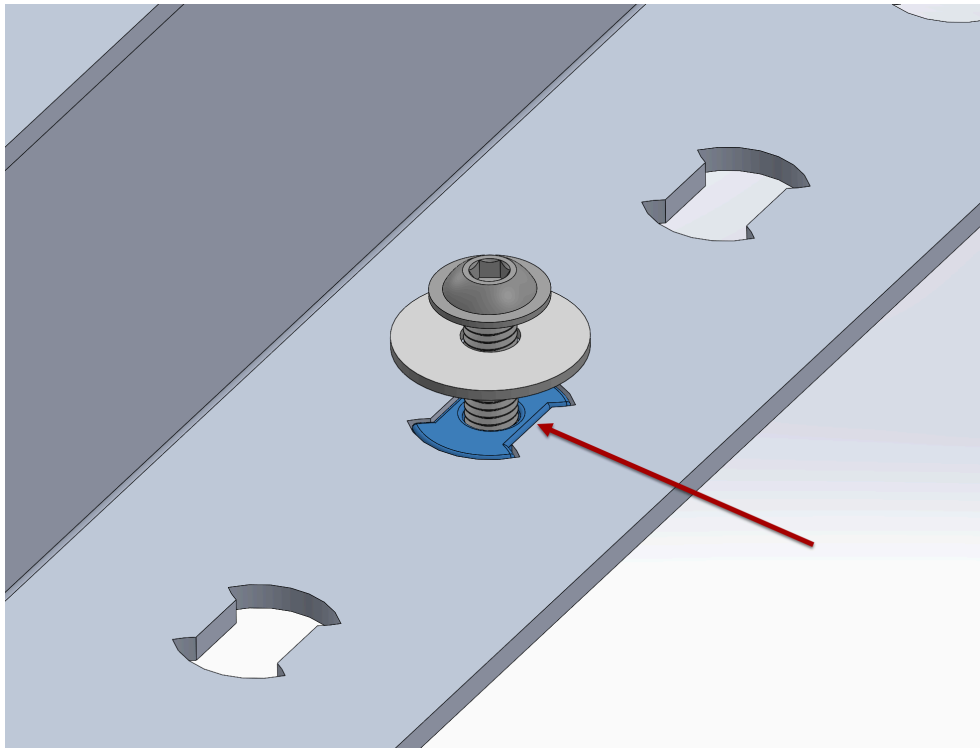




# Instructions

## M.A.S.S. ACCESSORY ALIGNMENT SPACER

If your accessory has the cutout shape shown below, use the supplied alignment spacer to keep the accessory installation bolt centered. Install the Alignment Spacer where needed as shown below, then resume MASS Accessory Installation.



**Thank you!**

At American Adventure Lab, we strive to improve anywhere we can. If you experience any issues with this product or have any suggestions, please let us know.

If you have any questions or concerns, please don't hesitate to reach out to us at 385.202.4188 or via email at [Sales@AmericanAdventureLab.com](mailto:Sales@AmericanAdventureLab.com).